

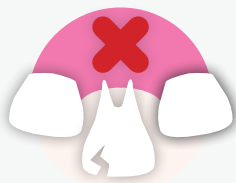
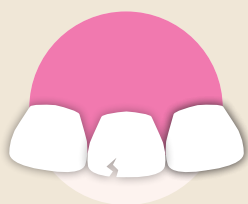


# DENTAL INJURIES

## HOW TO HANDLE A DENTAL EMERGENCY



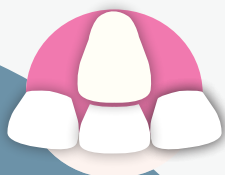
### DENTAL FIRST AID FOR BABY TEETH



- 1 STEP ONE**  
Do not put the baby tooth back in where it has dislodged from



- 2 STEP TWO**  
Store tooth in milk or saliva and see a dentist as soon as possible



- 3 STEP THREE**  
See your dentist regularly to monitor the development of adult teeth



### DENTAL FIRST AID ADULT TEETH



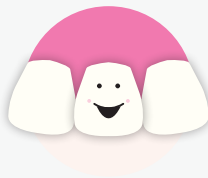
- 1 STEP ONE**  
Pick up tooth by the crown only, avoid touching the root



- 2 STEP TWO**  
Preferably rinse with milk or with tap water but only for a second or two



- 3 STEP THREE**  
Insert tooth in previous position, use cloth, tissue, foil or mouthguard to keep it in place



- 4 STEP FOUR**  
See a dentist immediately, the sooner you see a dentist the more likely the tooth will survive

SUPPORTING  
YOU AND YOUR  
HEALTHY SMILE

